

Save money on your CUC bills now!

A real-time energy monitor that works with your automation system showing what you are spending on electricity, right on your TV.

SAVE UP TO 20% ON YOUR ENERGY BILL!

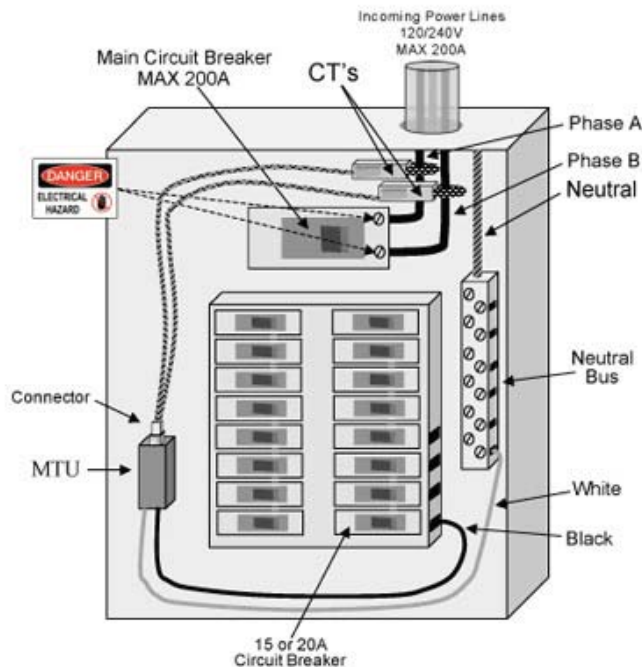
Cayman households and businesses spend thousands of dollars a year on their CUC bills. Well, now you don't have to. Add the TED Energy Monitor to your automated home or business and save up to 20% on your energy bill (saving you hundreds of dollars).

THE CONCEPT IS SIMPLE

If you can measure it, you can manage it.
Will help reduce demand.
Will help save money immediately.
Will help save the environment.

YOU WILL IMMEDIATELY KNOW

How much electricity is being consumed that very minute.
How much money is spent each day on electricity.
How much money has been spent so far for this billing cycle.
What your projected utility bill will be for this month.
Your daily and monthly peak demand.
The cost of operating every electrical device in your home.



SEAMLESS INTEGRATION WITH AUTOMATED TECHNOLOGIES.

Monitoring electricity usage allows events to be triggered throughout the home. TED Energy Monitor works with all home controllers. Current and historical usage (kW), cost (\$) and Carbon Dioxide (CO₂) are all values available for evaluation and display.



Simplify life around you.

EASY INSTALLATION

TED Energy Monitor is comprised of 4 basic components. A Measuring Transmitter Unit (MTU) located in the circuit breaker panel using two Current Transformers (CT's), a Receiving Display Unit (RDU) located in the home, a Personal Meter Data Repository (P-MDR) running on a local PC.

There are no wires to run. Data is transmitted over existing wiring in the home every 1 second, so no matter where you plug the RDU in, it receives data in real time.

Recommended installation by a qualified professional installer should take between 15 and 30 minutes.

ENVIRONMENTALLY FRIENDLY

Government policy and high energy costs are driving more environmentally-aware home energy usage. When combined with Automated Technologies-enabled switches, relays, dimmers, and thermostats, the TED Energy Monitor "greens" automated homes with real-time energy information.

Save money on your CUC® bills now!



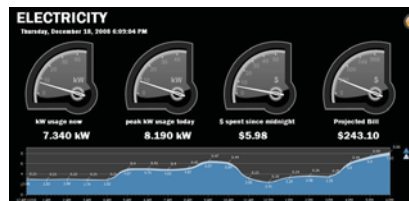
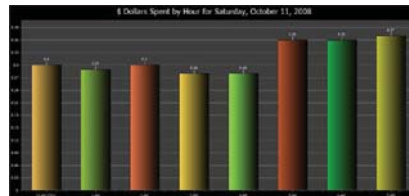
MISCELLANEOUS FEATURES

- Works with all meters: Digital, Mechanical, AMR
- Display Unit may be Wall-Mounted
- There are NO Batteries
- Maintains Data During Power Failure
- Accuracy +/- 2%
- Display is updated every 1 Second
- Automatically resets each month
- Use Alerts to display information on TV
- Send e-mail or text message notifications
- Can automatically adjust thermostats and appliances based on usage and energy rates



AVAILABLE DATA / DISPLAY

- Current \$/Hour Cost
- Current kW Power Usage
- kWh used since Midnight each day
- kWh used Month-to-Date
- \$ Spent since Midnight each day
- Peak kW Power used Today
- Peak kW Power used Month-to-Date
- Peak \$/Hour since Midnight
- Peak \$/Hour Month-to-Date
- Projected kWh for Month
- Projected \$ for Month
- Total \$ Cost Month-to-Date
- Current Energy Rate in Effect
- Days left in billing cycle
- Current Voltage
- Lowest Voltage Month-to-Date
- Highest Voltage Month-to-Date
- Flashing LED (Green, Yellow, Red)
- Audible Alarm & notification
- History for 13 Months



RATE FEATURES

- 5 Step/Tier Rates
- 4 Time-of-Use Rates
- Weekend / Holiday Rates
- Summer / Winter Rates
- Taxes
- Energy / Fuel Surcharges
- Minimum Charges
- Fixed Charges
- Any Combination of Above

SYSTEM REQUIREMENTS

Automated Technologies Controller
 TED Footprints (included)
 Energy Monitor Driver for Control4 (included)
 PC with Windows XP, Vista or Server 2003

OPERATIONAL REQUIREMENTS

- EM-200-C4 is only suitable for use on 120/240V single-phase 60Hz services.
- EM-200-C4 is only suitable for services of 200 AMPS or less (For 400 AMP service use EM-400-C4).
- EM-200-C4 is suitable for use with single disconnect service. (For services with two disconnects use EM-400-C4).
- EM-200-C4 is only suitable for services with 350 MCM Conductors.
- The system will not work with 3-Phase service.
- The system will not work with 230V 50Hz service.
- The system will not work if your service conductors are larger than 1 inch in diameter.

REGULATORY / CERTIFICATIONS

This device complies with part 15 of the FCC Rules. Operation is subject to the following two conditions: (1) This device may not cause harmful interference and (2) This device must accept any interference received, including interference that may cause undesirable operation. FOR HOME AND OFFICE USE

MODELS AVAILABLE

EM-200-C4 for up to 200 AMP Service
EM-400-C4 for up to 400 AMP Service

